

RAVENNA

L'arte di una capitale tra V e VI secolo

Laprof di Arte

IMPARA L'ARTE

Ravenna



La forma della città

RAVENNA CITTÀ ROMANA E ALTOMEDIEVALE

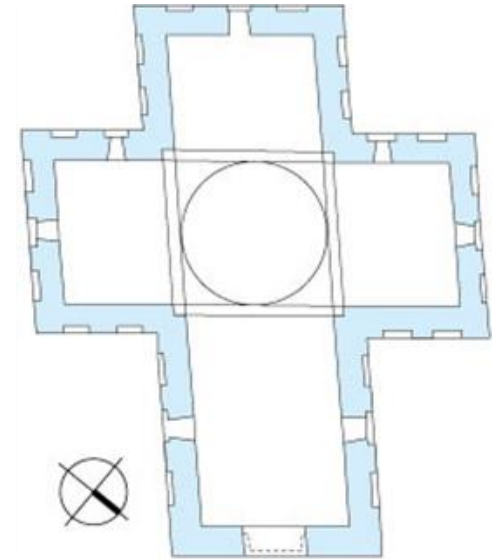
- interramento dello specchio d'acqua in parte interessato da cimiteri di Età gota
- linea di costa antica e vie d'acqua interne
- ubicazione presunta di alcuni complessi monumentali
- chiese non più esistenti menzionate nel *Codex Pontificalis Ecclesiae Ravennatis*



Ravenna

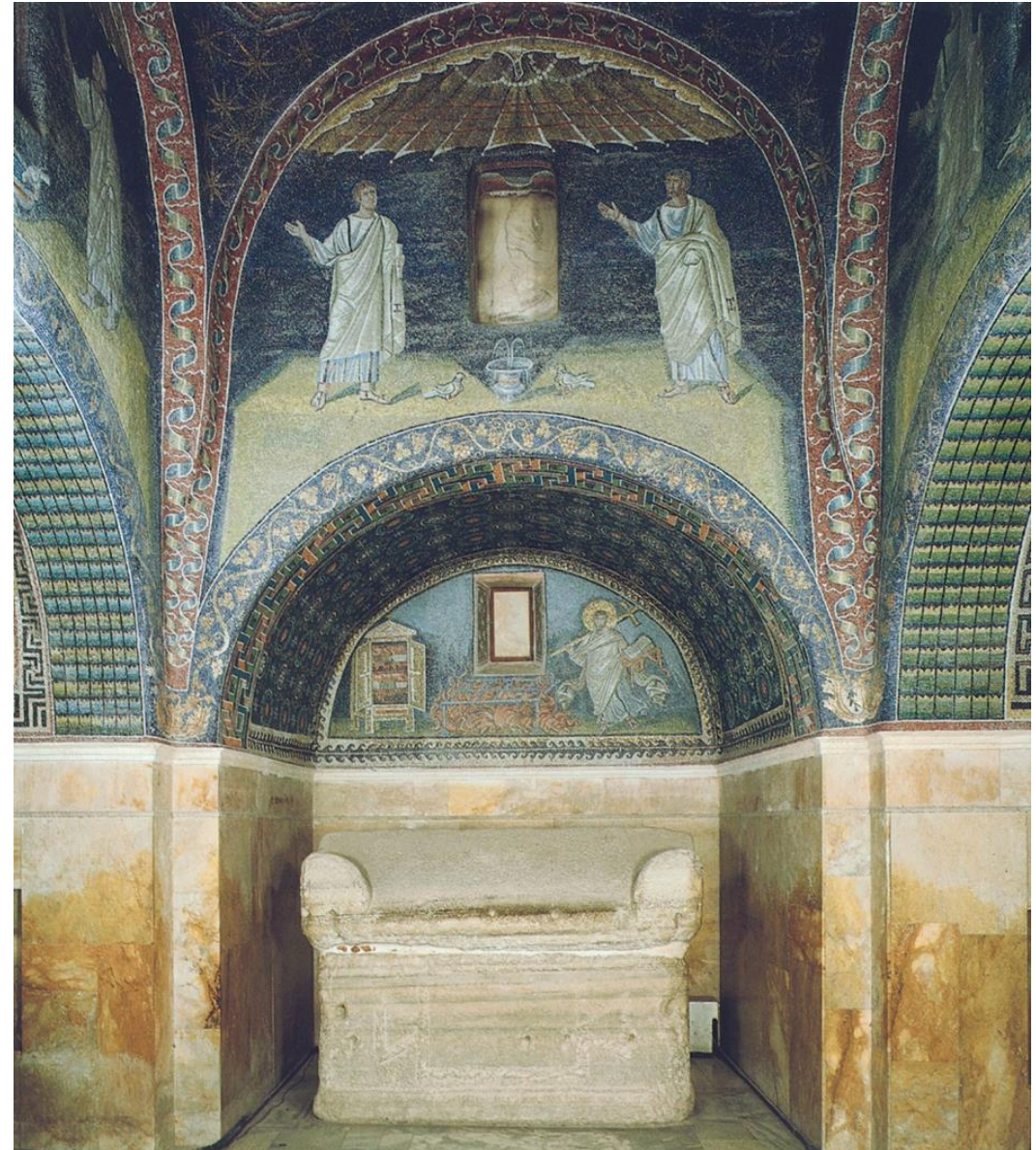
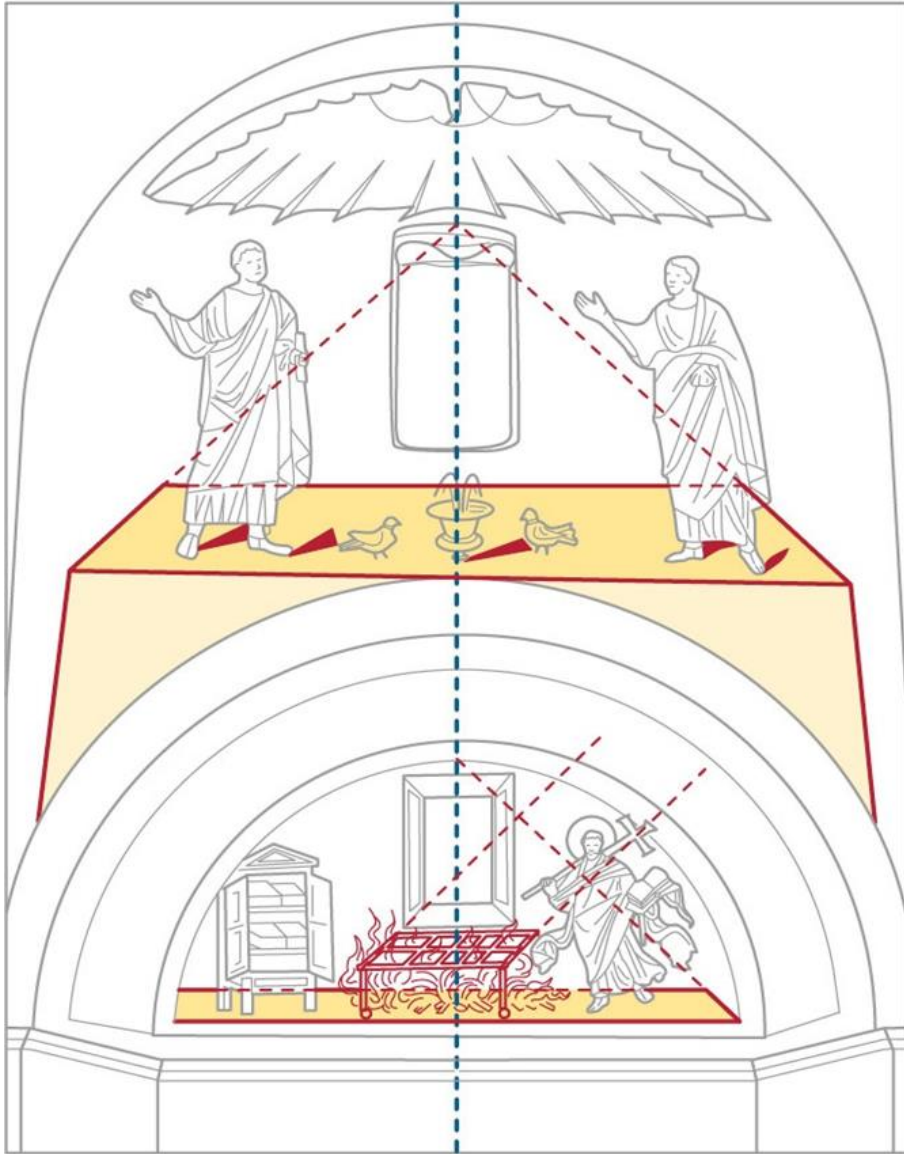


Tardo Impero. Mausoleo di Galla Placidia (425-440)



Ravenna

Tardo Impero. Mausoleo di Galla Placidia (425-440)



Ravenna



Tardo Impero. Mausoleo di Galla Placidia (425-440)



Ravenna

Tardo Impero. Mausoleo di Galla Placidia (425-440)



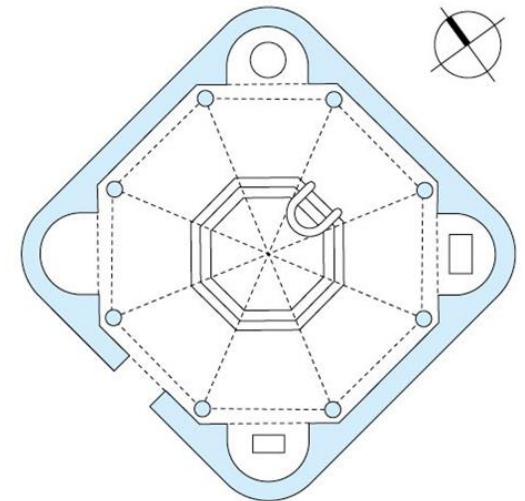
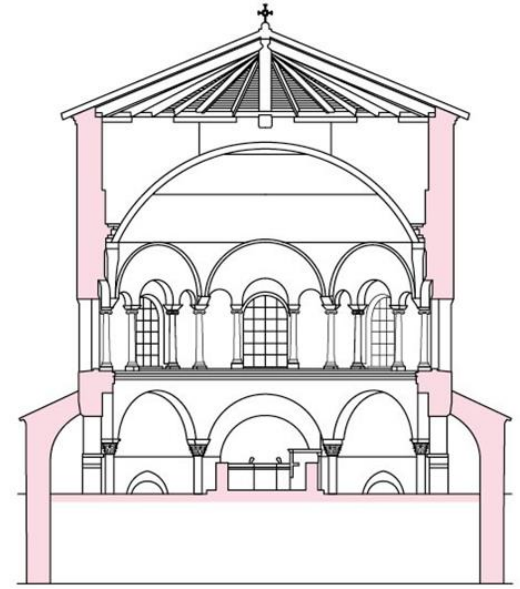
Tardo Impero. Mausoleo di Galla Placidia (425-440)



Ravenna

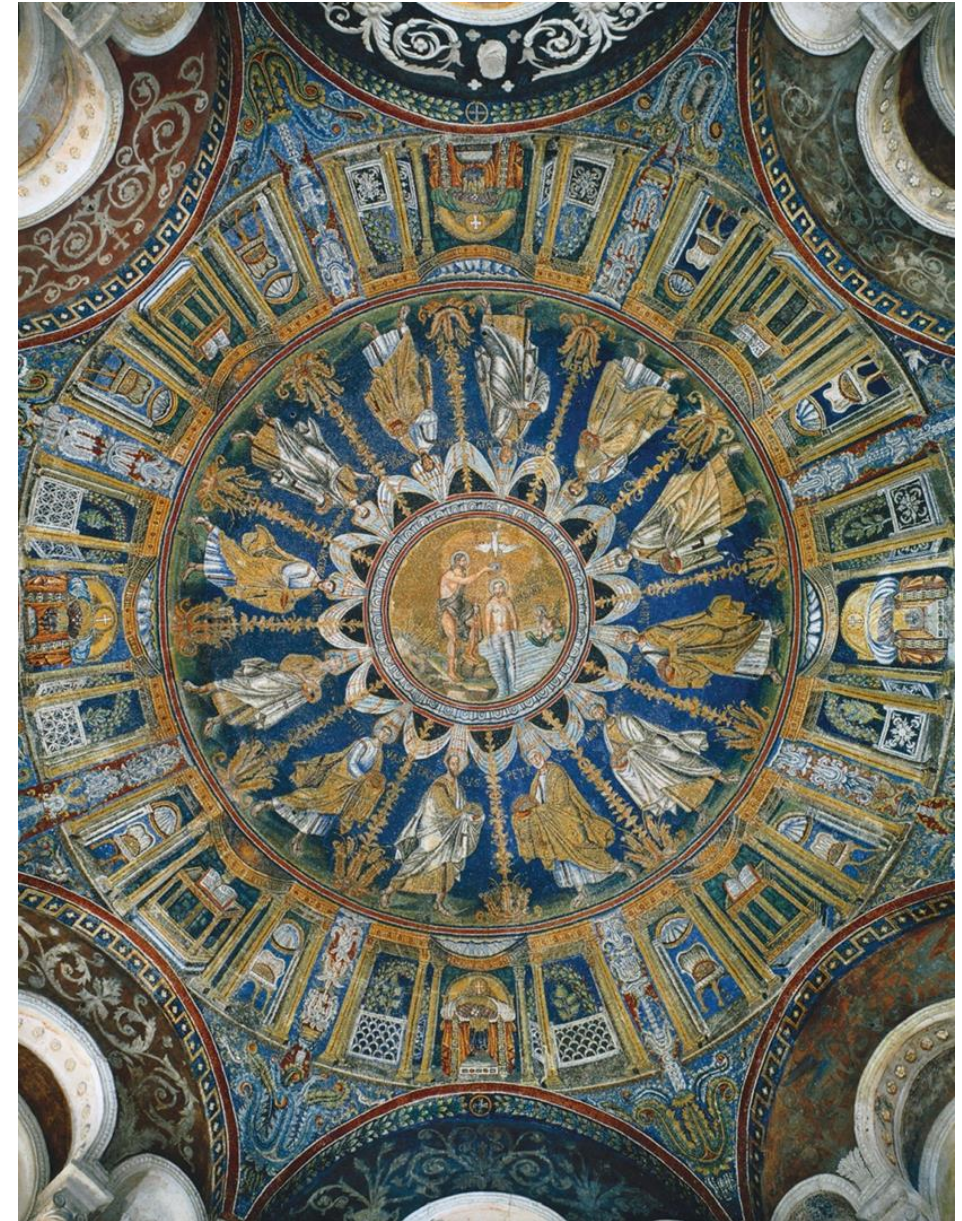


Tardo Impero. Battistero degli Ortodossi (458)



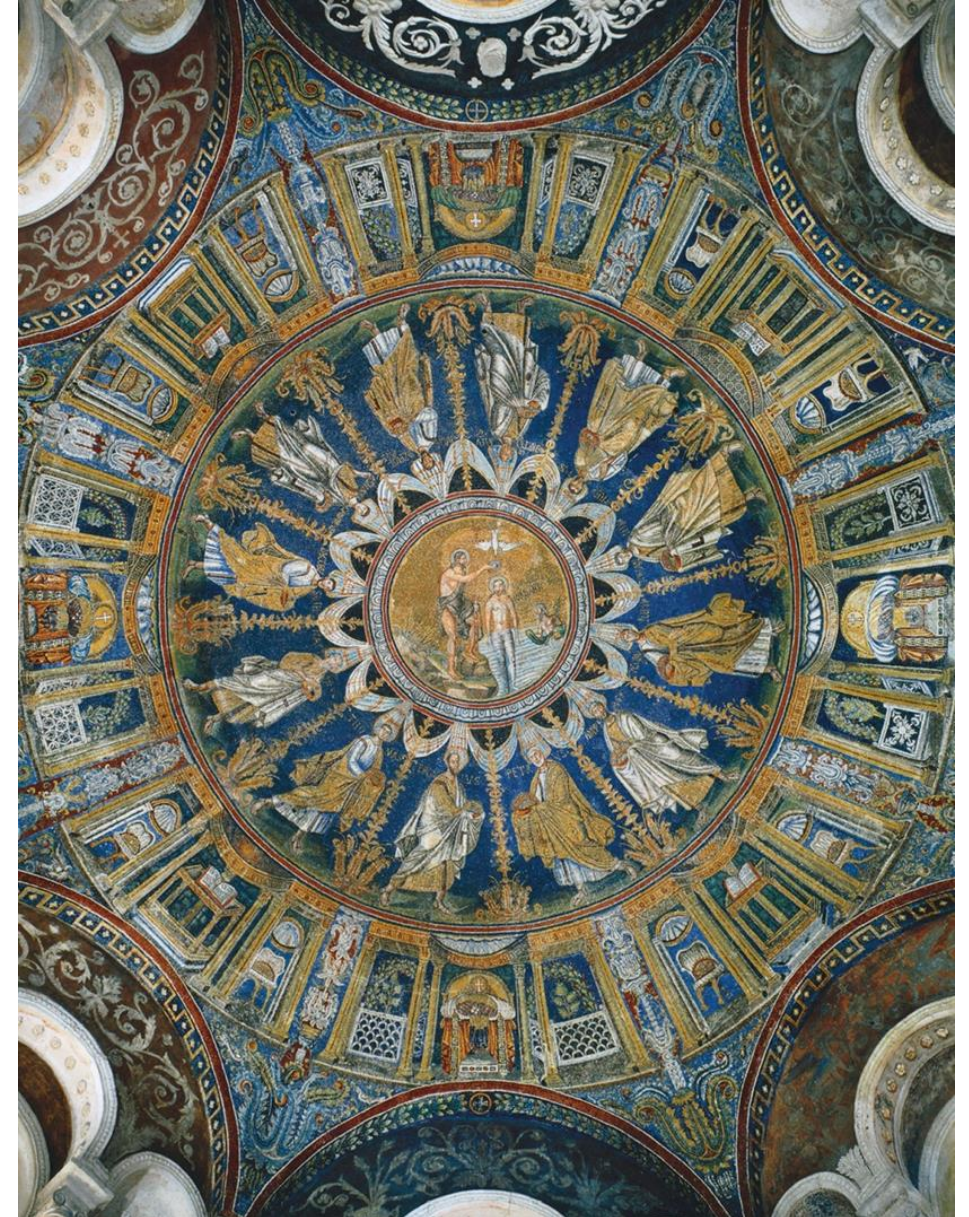
Ravenna

Tardo Impero. Battistero degli Ortodossi (458)



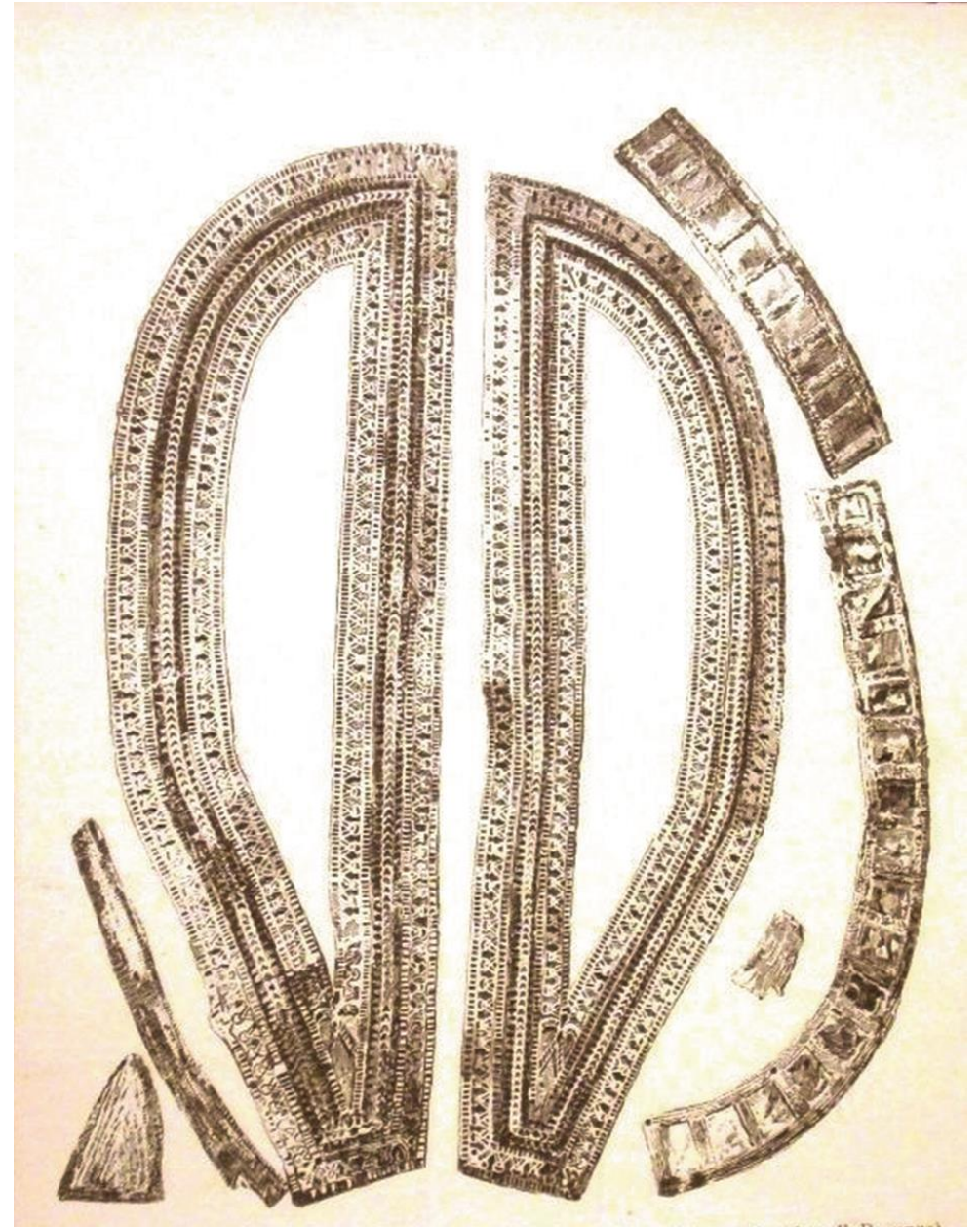
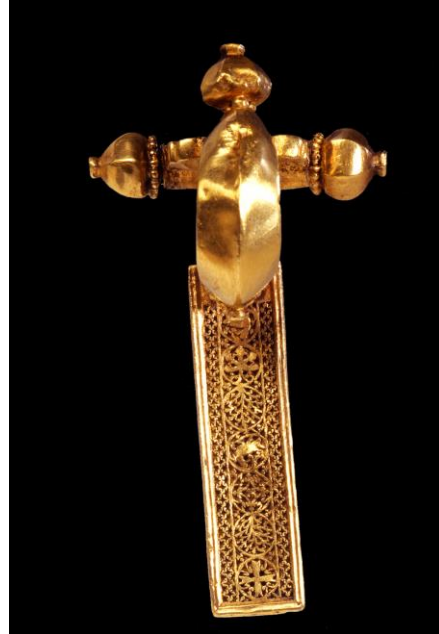
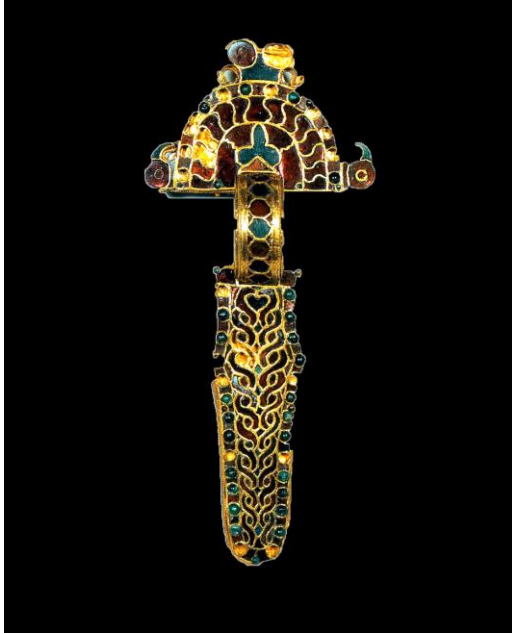
Ravenna

Tardo Impero. Battistero degli Ortodossi (458)



Ravenna

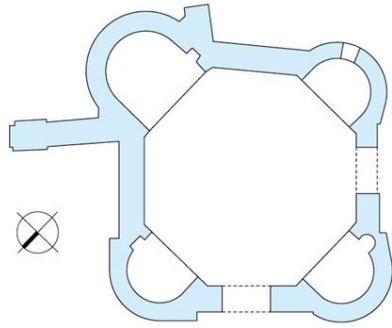
Tardo Impero. Tesori tra V e VI secolo



Ravenna



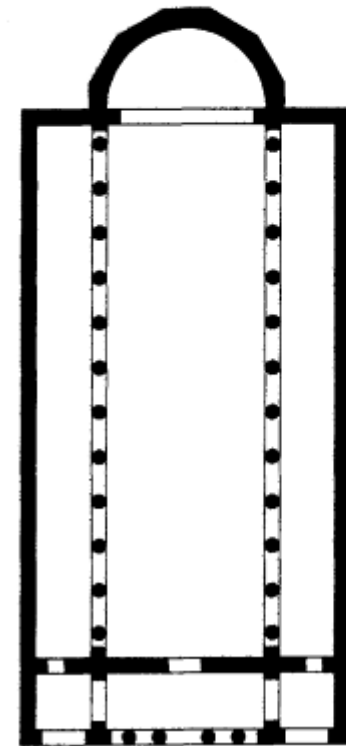
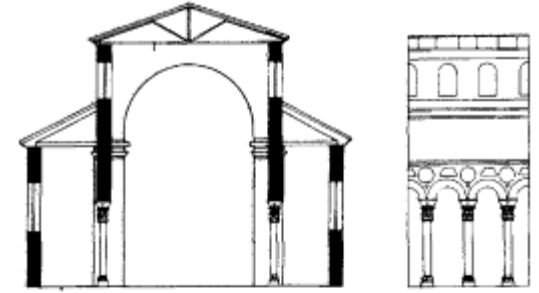
Età ostrogota. Battistero degli ariani (480-520)



Ravenna



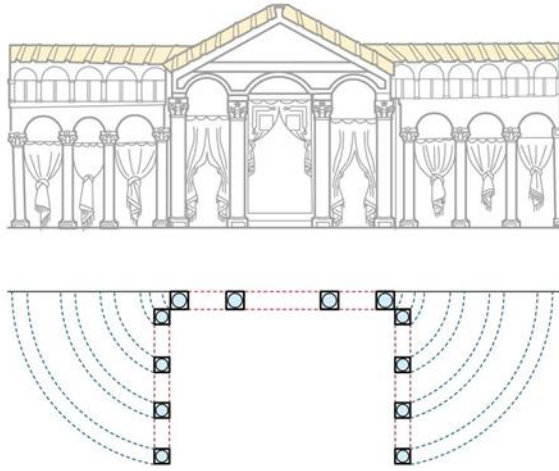
Età ostrogota. Sant'Apollinare nuovo (VI secolo)



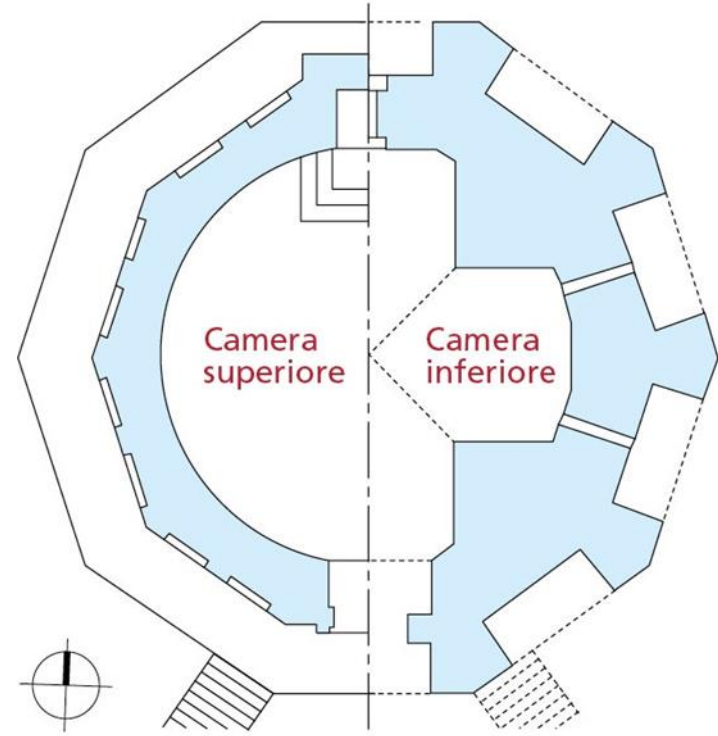
Età ostrogota. Sant'Apollinare nuovo (VI secolo)



Età ostrogota. Sant'Apollinare nuovo (VI secolo)



Età ostrogota. Mausoleo di Teodorico (520)



Ravenna

Età ostrogota. Domus dei tappeti di pietra (V – VI secolo)

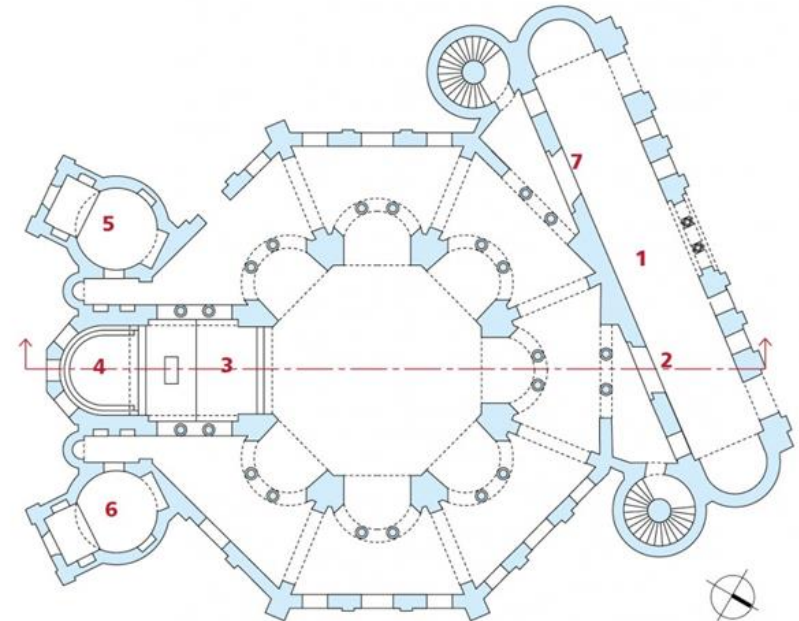
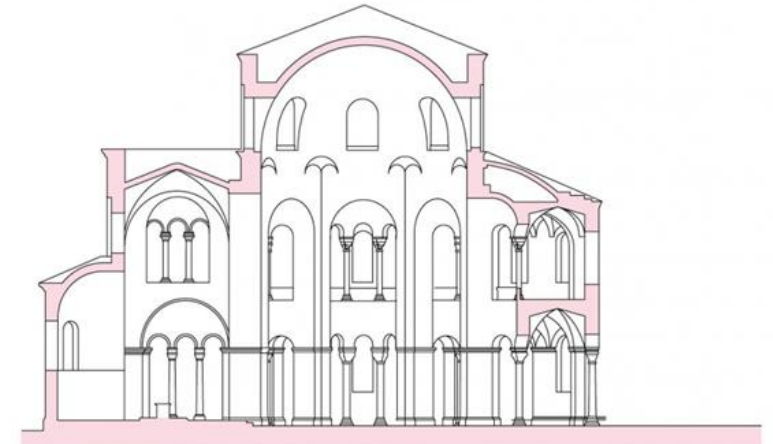


Età ostrogota. Domus dei tappeti di pietra (V – VI secolo)



Ravenna

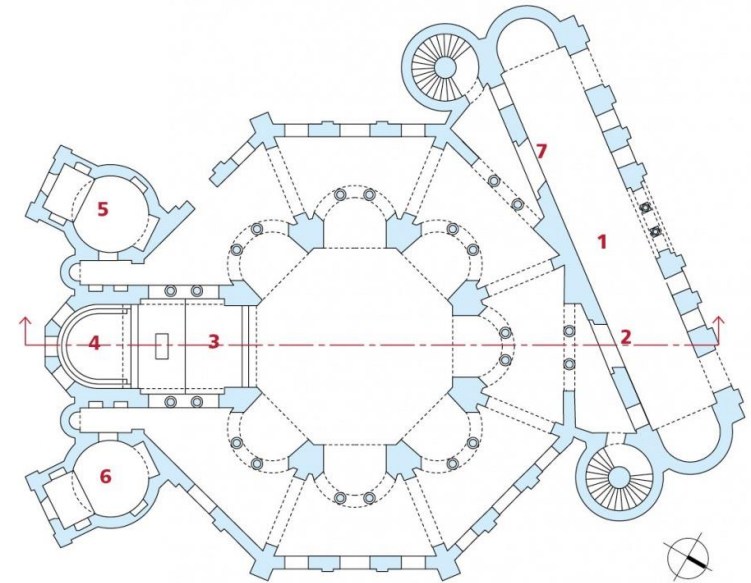
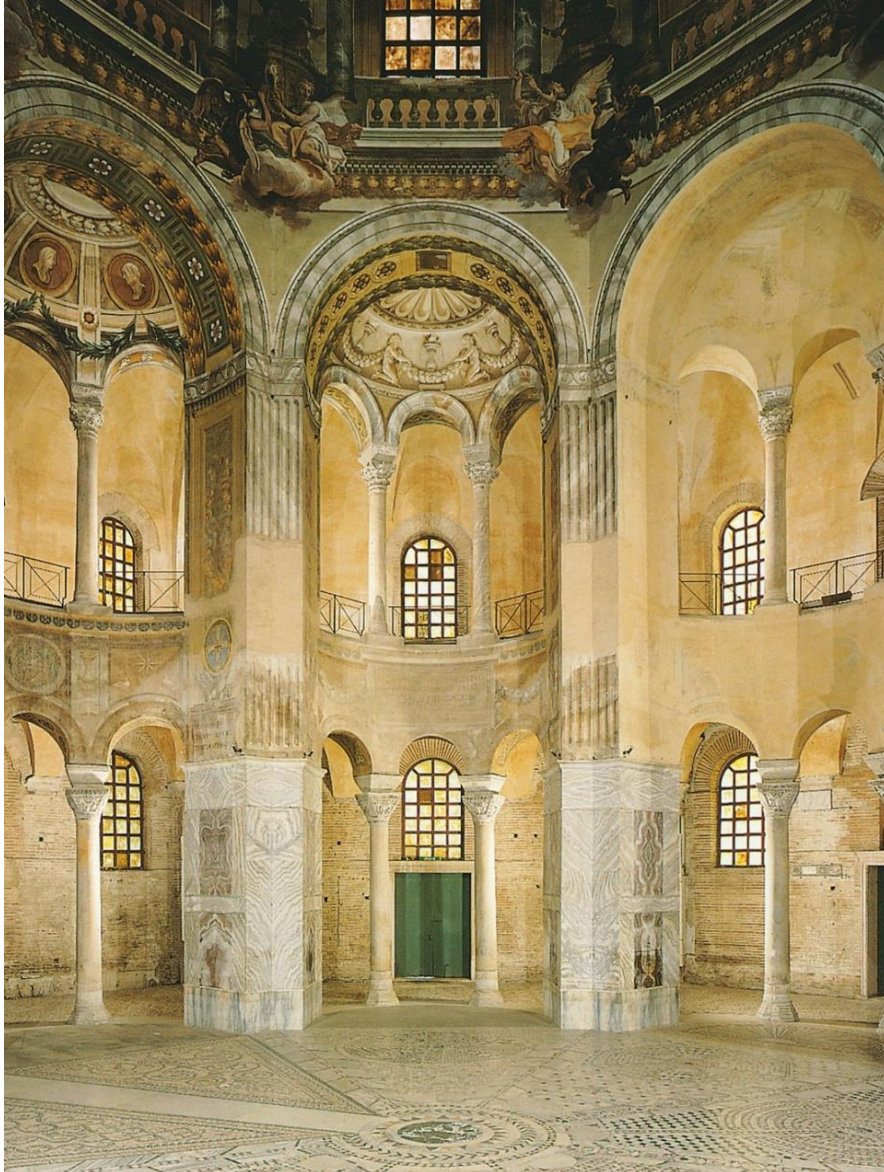
Età bizantina. Basilica di San Vitale (525-547 secolo)



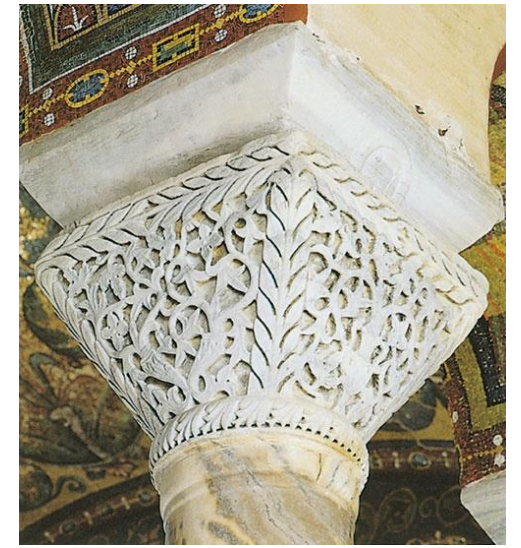
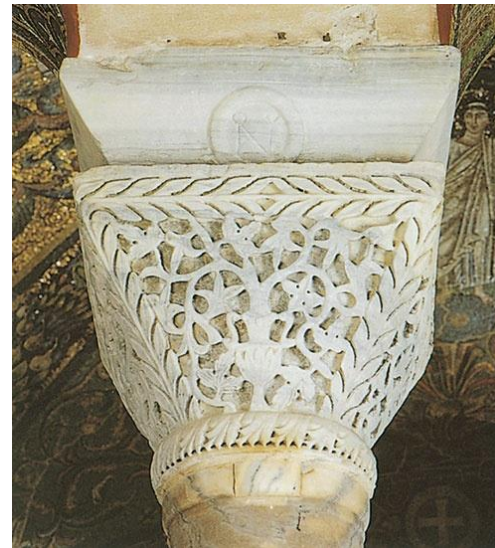
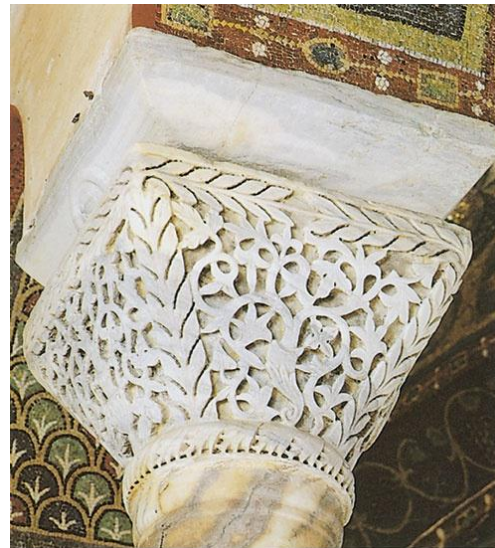
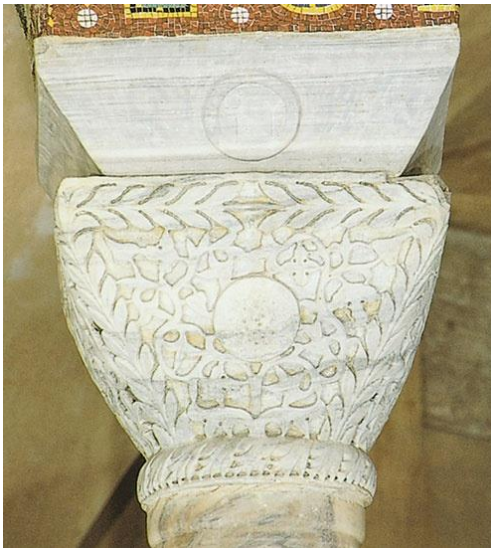
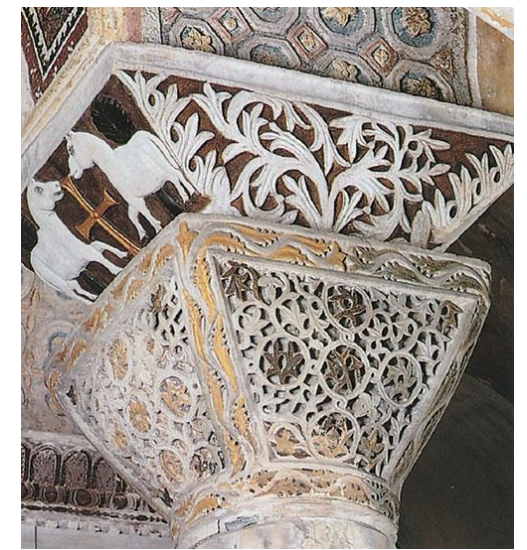
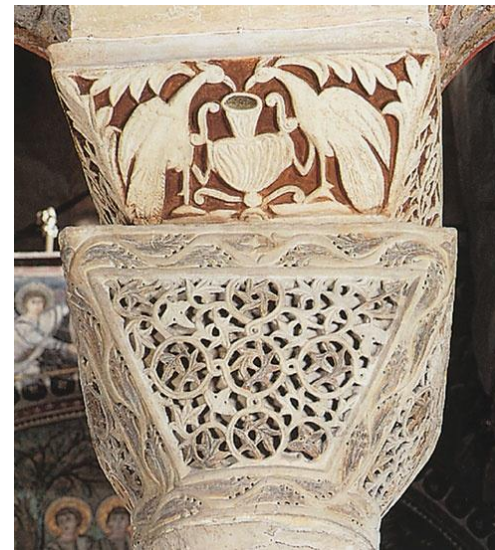
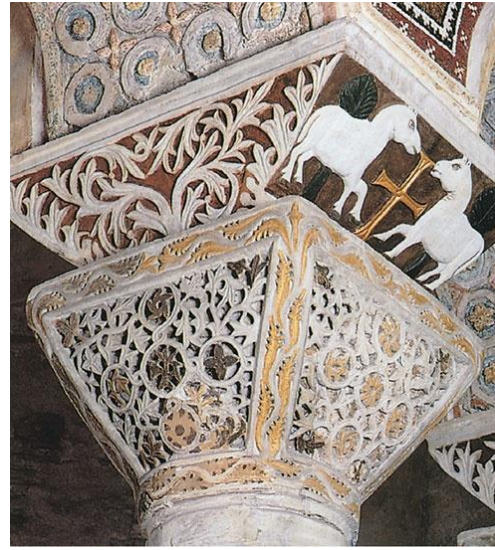
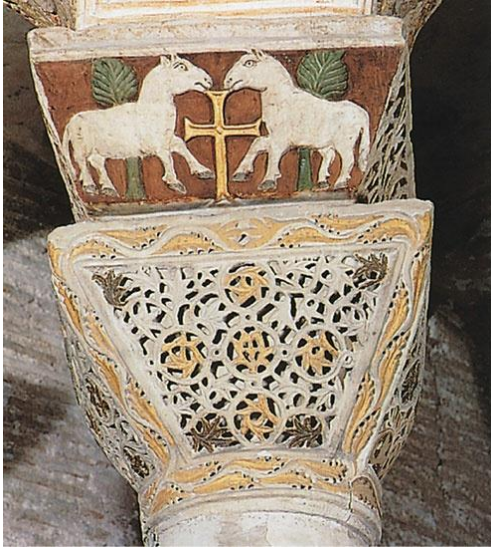
Ravenna



Età bizantina. Basilica di San Vitale (525-547 secolo)

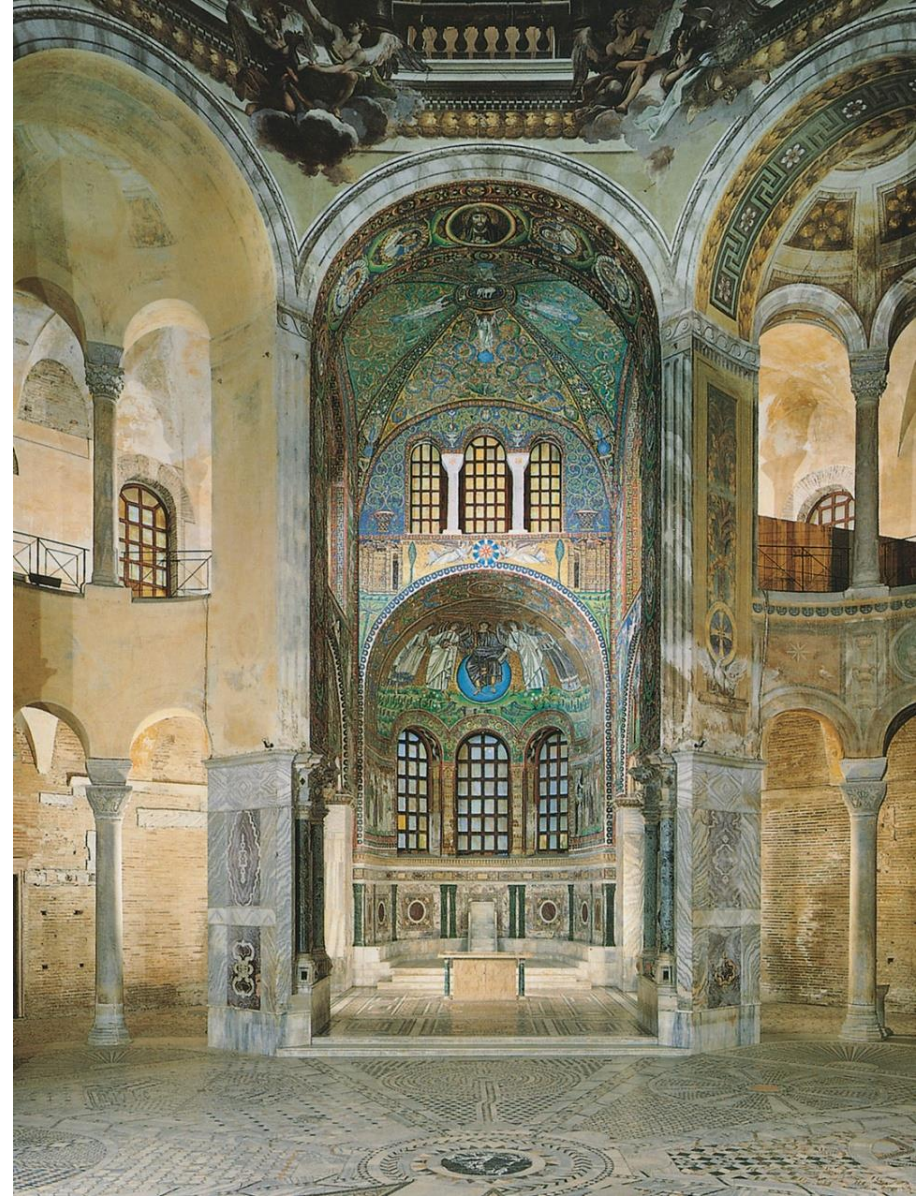


Età bizantina. Basilica di San Vitale (525-547 secolo)



Ravenna

Età bizantina. Basilica di San Vitale (525-547 secolo)



Ravenna

Età bizantina. Basilica di San Vitale (525-547 secolo)



Ravenna

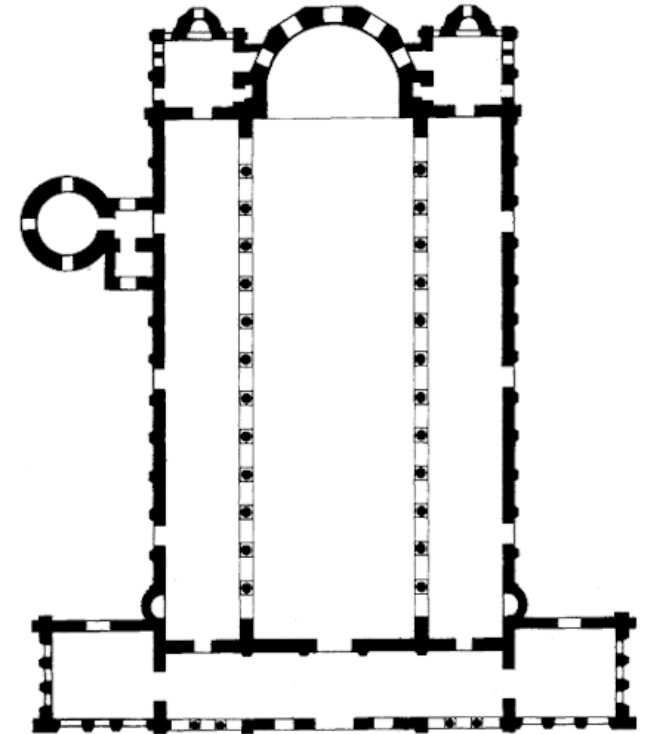
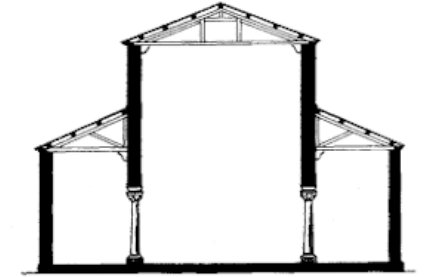
Età bizantina. Basilica di San Vitale (525-547 secolo)



Ravenna



Età bizantina. Sant'Apollinare in Classe (532-549 secolo)



Ravenna

Età bizantina. Sant'Apollinare in Classe (532-549 secolo)



Ravenna



Età bizantina. La cattedra di Massimiano (VI secolo)

